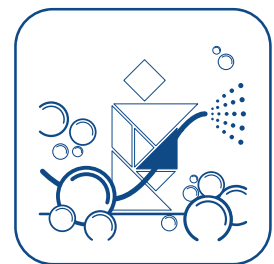




**PHT - HYGIENE**  
**LOW PRESSURE**  
**FOAM CLEANING**



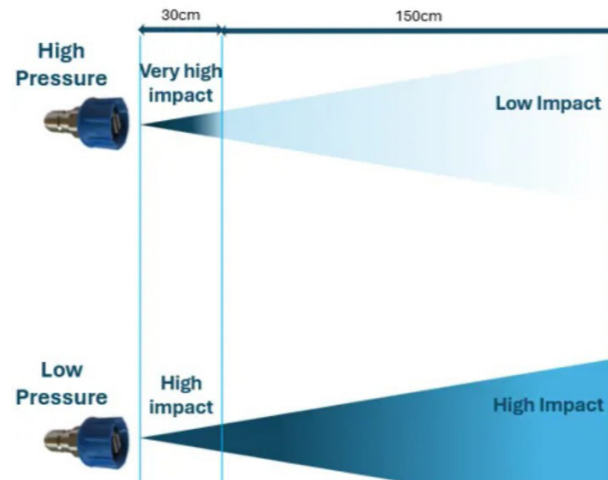


**PHT Low pressure foam cleaning**

We focus on quality, reliability, energy efficiency and safety at a good price-performance ratio

- All systems and pumps made entirely of stainless steel
- All pumps are energy-efficient so that they can be subsidised when replacing old systems
- **Next technology:** Only with us can 3 chemicals be used in succession via one outlet and therefore without risk
- Significant increase in efficiency compared to alternative systems such as high-pressure cleaning

We support you with planning, consulting, project planning, realisation, installation, commissioning, training and service.



Spraying behaviour in contrast to high-pressure cleaners



**Foam cleaning with the innovative Next technology:**

Use up to 3 chemicals via one injector block and one outlet

- Simple and logical operation
- Low-pressure technology for rinsing, foaming and disinfecting via one outlet



Rinse, water



alkaline, foam



acidic, foam



neutral, spray disinfection or



neutral, foam disinfection





**Main stations**

are stationary pressure boosting systems in a stainless steel housing based on stainless steel centrifugal pumps (incl. frequency control) with an integrated cleaning unit for foaming, rinsing and/or disinfecting.

**Low pressure main station**

Type MS 0127 – MS 0427

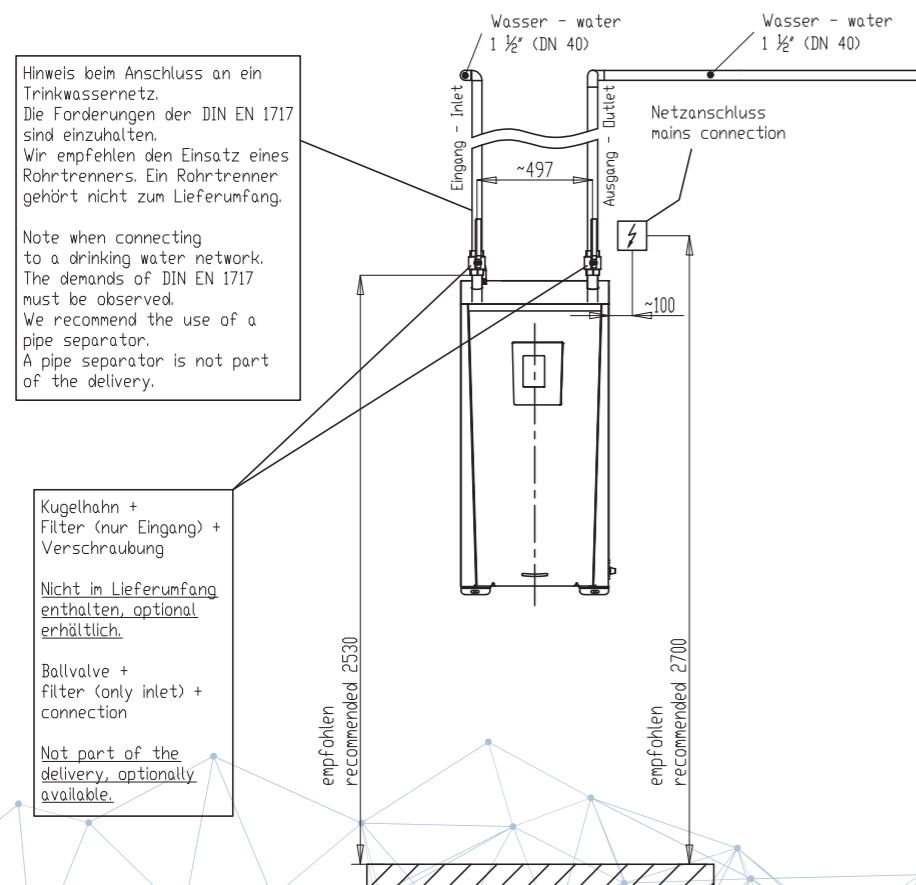
Type MS 0127 Next – MS 0427 Next

- working pressure: max 27 bar
- in stainless steel housing with up to 2 injectors
- for 1-4 users simultaneously
- incl. integrated injector flushing system (Next only)

**Medium pressure main station:**

MS 0145 – MS 0445 / MS 0145 Next – MS 0445 Next

- working pressure: max. 45 bar
- in stainless steel housing with up to 2 injectors
- for 1-4 users simultaneously
- incl. integrated injector flushing system (Next only)



**Booster**

are pump systems based on stainless steel centrifugal pumps.

The pump systems are available as complete systems, including frequency control, pressure monitor, overheating protection and dry-running protection, either in a stainless steel wall frame (housing / cabinet) or on a stainless steel base frame (on feet / floor).

The systems are designed for indirect connection to the water supply network and supply the satellite stations or taps via a pressurised pipe network.



**Low pressure booster**

(max. 27 bar)

**Single-pump systems**

Type B 050-27 F / C until

type B 270-27 F / C

- on stainless steel base frame
- or in stainless steel wall frame (C)
- for 1 to 9 users simultaneously

**Multi-pump systems**

Typ B 400-27 F until

type B 810-27 F

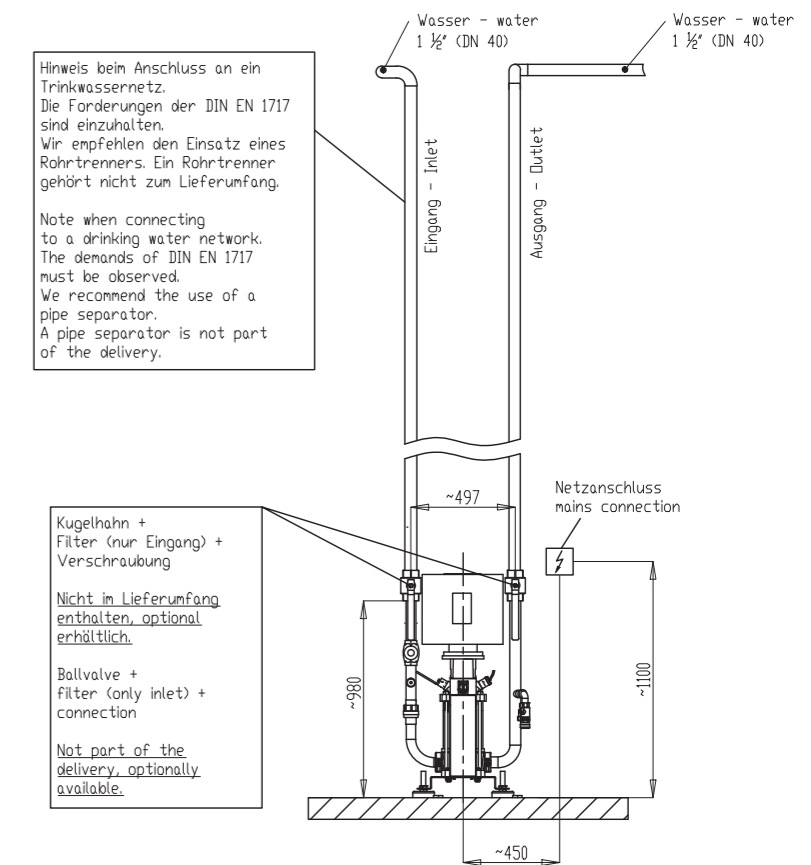
- on stainless steel base frame
- for 12 to 27 users simultaneously

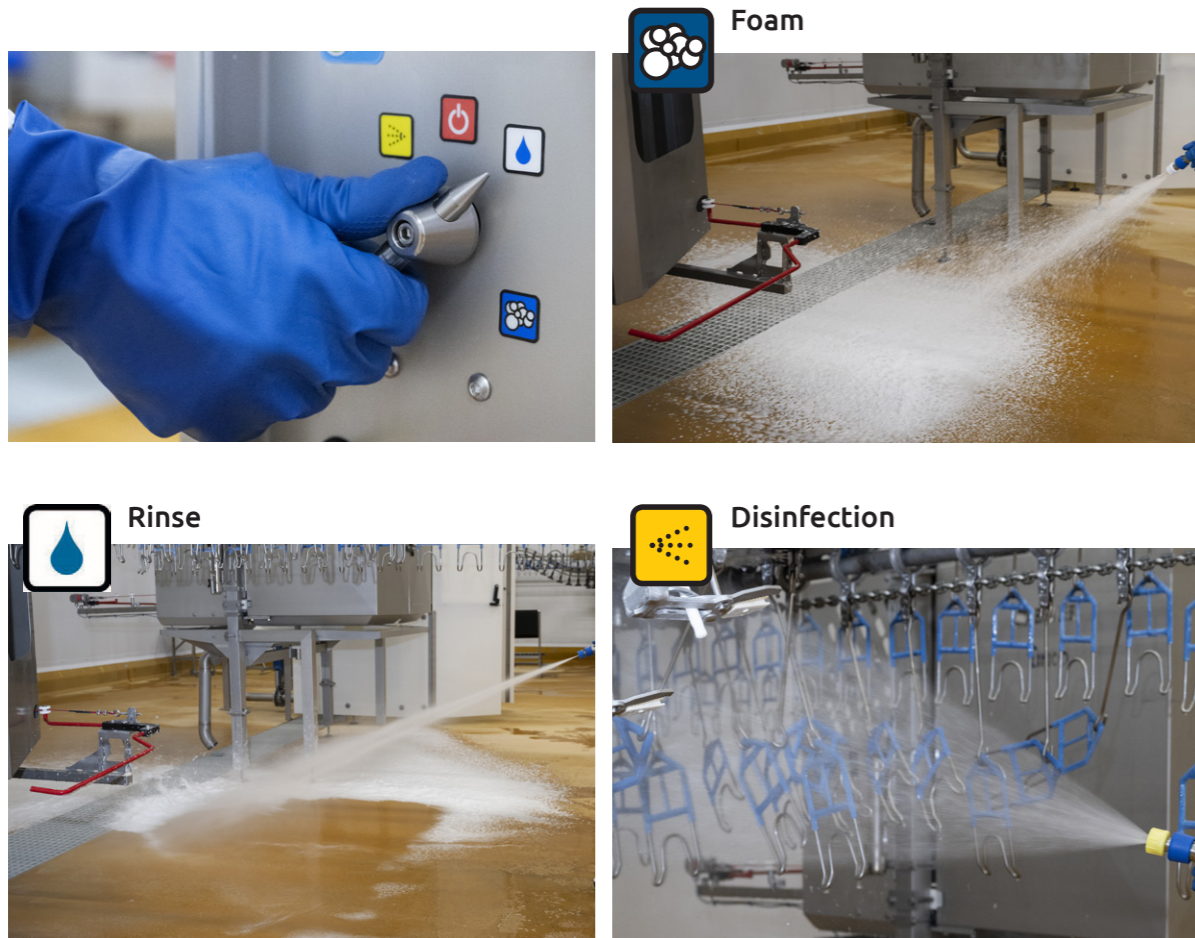
**Medium pressure boosters**

(max. 40 / 45 bar)

**Pump systems**

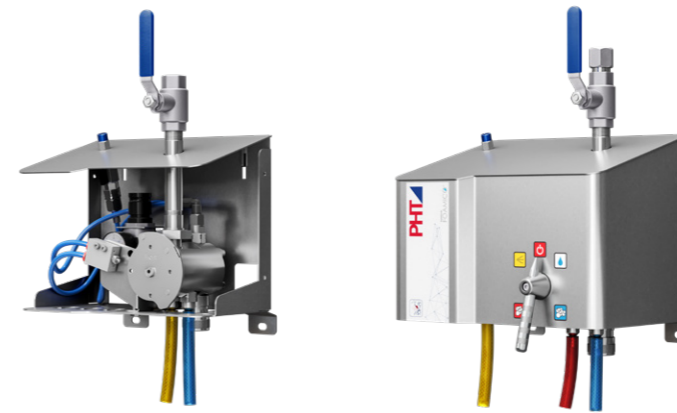
- on stainless steel base frame
- Type B 060-45 F
- for 1 user up to 45 bar
- Type B 090-40 F
- for 2 users simultaneously up to 40 bar
- Type B 200-40 F to B 810-40 F
- for 6 to 27 users simultaneously up to 42 bar,
- larger pumps on request





**Stationary satellite systems**

are cleaning systems that are supplied with the necessary pressurised water from pressure boosting systems or main stations.



**Type SU 0127 / Type SU 0150**

- with manual function changeover
- supply line pressure:  
minimal: 10 bar / 25 bar  
maximum: 27 bar / 50 bar
- up to 2 detergents
- up to 2 outlets

**Type SU 0127 Next / Type SU 0150 Next**

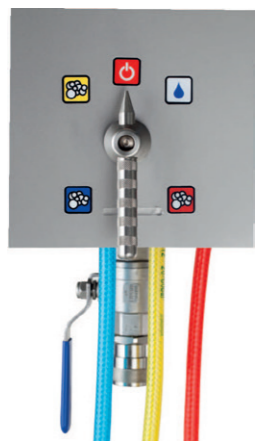
- with manual function changeover
- supply line pressure:  
minimal: 10 bar / 25 bar  
maximum: 27 bar / 50 bar
- Up to 3 cleaning agents via one outlet
- incl. integrated injector rinsing system

**Automatic hose reels made of stainless steel**



**Type AV3500**

- Concealed tension spring
- Easy to maintain
- Made in Italy



**Next Technology:**

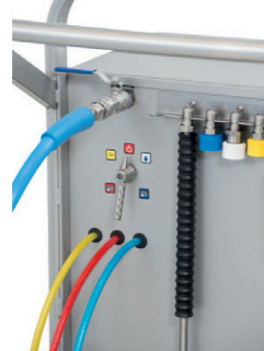
Up to 3 chemicals via one output

Modelno.	1. injector	2. injector	3. injector
xxxx-1	Foam	Spray disin.	-
xxxx-2	Foam	Foam	-
xxxx-3	Foam	Spray disin.	Spray disin.
xxxx-4	Foam	Foam	Spray disin.
xxxx-5	Foam	Foam	Foam



**Mobile cleaning systems**

are complete low-pressure cleaning systems based on frequency-controlled stainless steel centrifugal pumps. All systems are equipped with a complete control system as well as a flow monitor and overheating protection. The mobile systems are equipped exclusively with Next injectors and can be operated with up to 3 cleaning/disinfecting agents. The systems are also optionally available with a compressor.



**All cleaning steps**

Foaming, rinsing, disinfecting with one device

Type MO 0127 Next  
Type MO 0227 Next

- incl. compressor (optional)
- maximum working pressure 27 bar up to 3 detergents via one outlet
- incl. integrated injector rinsing system
- incl. second hose connection for second operator possible with 0227 for rinsing (simultaneous foaming not possible)



Type MO 0145 Next

- incl. compressor (optional)
- 2 pressure levels 27 bar/40 bar
- up to 3 cleaning agents via one outlet
- incl. integrated injector flushing system



**Mobile satellite systems on trolleys**

are connected to pressurised pipe systems via flexible hose via flexible hose connections. The stainless steel trolleys also serve as a transport unit for up to 4 detergent containers as well as for the working hose and nozzle set.



**Low pressure satellite**

Type SU 0127 Next

**Medium pressure satellite**

Type SU 0150 Next



### Accessories

Standard accessories for main stations / satellite stations



Hand pistol type PHT 12-80



Hand pistol type PHT 12-100



Stainless steel / plastic ball valve  
(only permitted in Germany with special authorisation)



Rinsing lance 25/30 stainless steel



Rinsing nozzle 25/30 stainless steel



Disinfection nozzle 40/30 stainless steel



Foam nozzle 50/200 stainless steel



Automatic air vent for pressure booster systems for installation in the pump

We also offer quick-release couplings, nozzles, hoses, hose holders and canister holder systems for different requirements and special accessories

### Green Button to reduce water and energy consumption

The button is integrated into the pressure booster system and can be activated for work steps that require less pressure. This significantly reduces water and energy consumption.

- Reduces energy consumption by up to **52 %**
- Reduces water consumption by up to **20 %**
- Switches between medium and low pressure at one touch of a button
- Suitable for intermediate rinsing or when rinsing foam and disinfectant



Green Button	Not active with 24,3 bar	Active with 15 bar	Savings per hour	Savings
Energy consumption [kW/h]	2,7 kW/h	1,3 kW/h	1,4 kW/h	52%
Water flow rate [l/min]	29,6 l/min	23,8 l/min	348 l	20%

### Automatic system

Cleaning systems for automatic cleaning for foaming, rinsing and disinfecting. sanitising. They are controlled via external signals.



#### Automatic system

Cleaning systems for automatic cleaning for foaming, rinsing and sanitising the system is controlled via external signals

#### Main station

AMS 300  
Working pressure: 2/10 bar

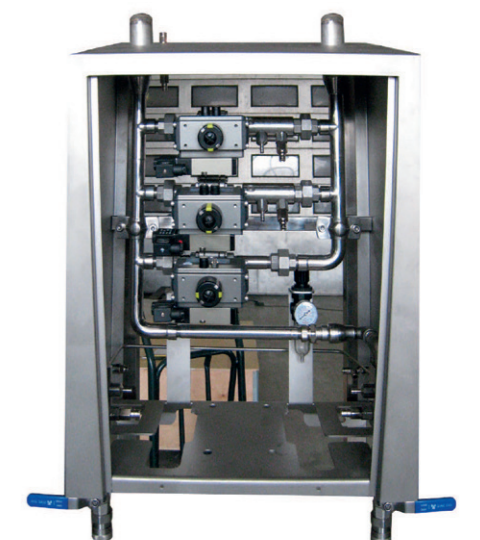
#### Satellite

ASU 450  
Working pressure: 10/30 bar

Jet cleaner with external drive for the internal cleaning of all types of large containers



Automatically foamed-in system



### **PHT Germany South**

Förchenholzstraße 19  
D-83646 Bad Tölz  
Phone: +49 (0) 80 41-799 24-0  
info.des@pht.group

### **PHT Germany North**

Gewerbepark Grüner Weg 34  
D-59269 Beckum  
Phone: +49 (0) 25 21-82 39 78-0  
info.den@pht.group

### **PHT Austria**

Grabenweg 68 / Top 7  
A-6020 Innsbruck  
Phone: +43 512 319 502  
info.at@pht.group

### **PHT South Africa**

134 Edison Crescent  
Centurion 0157  
Phone: +27 (0) 861 777993  
info.za@pht.group

### **PHT Middle East**

IFZA Business Park, Building A4,  
Office 102D, UAE-Dubai  
Phone: +971 (0) 58 279 22 27  
info.me@pht.group

